

ATLANTIS™

For all major
implant systems

*"Our customers tell us
the ATLANTIS Abutment Insertion Guide
works phenomenally well, making
the ATLANTIS Abutment installation faster and
more precise, while simultaneously improving
handling procedures and shortening chairtime."*

Bobby Williams, CDT
Synergy Ceramics and Techsource Dental
Plano, TX, USA

Precise and reliable abutment placement

The ATLANTIS Abutment Insertion Guide ensures the accuracy of ATLANTIS Abutment orientation and installation for single- and multiple-unit, cement-retained restorations on all major implant systems.



DENTSPLY
IMPLANTS

The ATLANTIS Abutment Insertion Guide is a precisely-crafted, 3D-printed device that securely holds an ATLANTIS Abutment at the correct angle and orientation during installation.

Precise design

The insertion guide uses adjacent teeth as an index and ensures precise and reliable abutment placement, reducing valuable patient chairtime. Moreover, the ATLANTIS Abutment scan data, provided by the patented ATLANTIS VAD (Virtual Abutment Design) is used to create the ATLANTIS Abutment Insertion Guide for a perfect design and fit.

Easy to use

Locating the screw access hole and inserting the abutment screw is easy because the guide is designed with an oriented access channel for each abutment.

Simply place the ATLANTIS Abutment(s) in the insertion guide and put the insertion guide in position. While holding down the guide, torque in the abutment(s).

While installing the abutment(s), soft tissue is less likely to interfere because the guide accurately matches the abutment margin design.

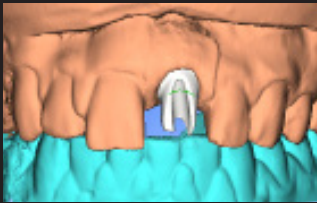
For added convenience, there is an eyelet to which you can attach a piece of dental floss, ensuring a safe restorative procedure.

Simple to order

ATLANTIS Abutment Insertion Guides can be requested with your ATLANTIS Abutment orders. Contact your local DENTSPLY Implants representative or Customer Service department for more information.



An esthetically demanding case with a reliable treatment solution



An ATLANTIS Abutment is designed using the ATLANTIS VAD software. The design can be reviewed and/or edited in the ATLANTIS 3D Editor by the dental technician before being manufactured by DENTSPLY Implants.



An ATLANTIS Abutment Insertion Guide is created from the ATLANTIS Abutment design. The produced abutment and guide are delivered to the dental laboratory. When the restoration is finalized, it is sent to the clinician.



After placing the abutment in the guide, the guide is seated using the neighboring teeth as an index. While holding the guide in place, the abutment screw is inserted and tightened with light finger force.



After removing the guide, the abutment is secured to the implant using the appropriate torque. The screw access hole is blocked and the abutment is ready for cementation of the final restoration.

Courtesy of Dr. Arnold Rosen, MBA, DDS