

ATLANTIS™

For all major
implant systems

Beyond CAD/CAM

ATLANTIS™ patient-specific abutments



DENTSPLY
IMPLANTS

Unique originals for unique individuals

As a part of the digital solutions offering from DENTSPLY Implants, ATLANTIS abutments support cement-, screw- and attachment-retained restorations for all major implant systems, providing an excellent foundation for optimal function and esthetics.

Incorporating ATLANTIS into the dental practice and dental laboratory provides peace of mind for both clinicians and dental technicians while allowing for increased efficiency and profitability.



Surgical flexibility

ATLANTIS abutments are available for all major implant systems and with 85 compatible implant connections, you can restore your preferred implant system(s) with ATLANTIS abutments.



Restorative freedom

ATLANTIS abutments offer you freedom of restorative choice with cement-, (single-tooth) screw-, and attachment-retained restorations in biocompatible materials including titanium, gold-shaded titanium and zirconia, meeting patient requirements and preferences for function and esthetics.

 <0.2%

Complaint rate based on an analysis of registered screw-related complaints in relation to the total number of abutments sold since 2008

33 

Published clinical studies and case reports documenting success using ATLANTIS abutments on different implant platforms

 85

Number of compatible implant connections



Comprehensive warranty program*

 99%

On-time, early or same-day shipping performance



>1.5M

ATLANTIS abutments produced and sold globally

1999

ATLANTIS Abutment is introduced and the first abutments are delivered

1 min 

Time it can take to enter and process an order for an ATLANTIS Abutment in ATLANTIS WebOrder

*Subject to the terms and conditions of the ATLANTIS abutments warranty.

ATLANTIS VAD™ goes beyond CAD

CAD = Designed by dental technicians/aided by computers

ATLANTIS VAD™ = Designed by computers/aided by dental technicians

The ATLANTIS BioDesign Matrix is a synergy of four unique features that together allow for the design and production of consistent, high-quality, patient-specific abutments for all major implant systems.

ATLANTIS VAD™

Designed from the final tooth shape. ATLANTIS VAD (Virtual Abutment Design) software makes it possible to design each abutment in relation to the edentulous space and the surrounding teeth for high precision and a more natural esthetic result.

Natural Shape™

Unique anatomical shape and emergence profile that nourishes soft tissue management and provides excellent support and retention of the final restoration.

Soft-tissue Adapt™

The combination of biological, anatomical and engineering parameters that provide the beneficial conditions for healing soft tissue and adapting it to the finished crown.

Custom Connect™

Strong and stable fit – customized connection for all major implant system. ATLANTIS abutment connections and screws are specifically engineered and tested for each implant interface for accurate fit, stability, and a successful result.



ATLANTIS BioDesign Matrix™

Custom Connect™ – strong and stable fit

- Indexing – ensures the abutment is correctly oriented
- Anti-rotation – prevents movement during torquing
- Abutment-to-implant fit – designed and milled precise connection providing optimal load transfer
- Abutment screw – works with existing drivers and provides retrievable mechanical attachment

The natural choice

Why should you choose ATLANTIS patient-specific solutions?

All the necessary parameters are taken into consideration in the design of ATLANTIS abutments for outstanding prosthetic solutions.

Through the use of the patented ATLANTIS VAD (Virtual Abutment Design) software, ATLANTIS abutments are individually designed from the final tooth shape, taking the specific edentulous space, surrounding teeth, and soft tissue anatomy into consideration.

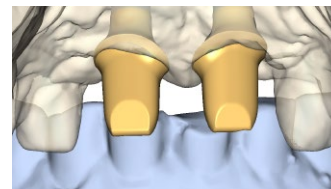
Given these factors, implant prosthetics truly mimic natural tooth function and appearance. Furthermore, ATLANTIS patient-specific abutments eliminate the time needed for inventory management and chairside modification.



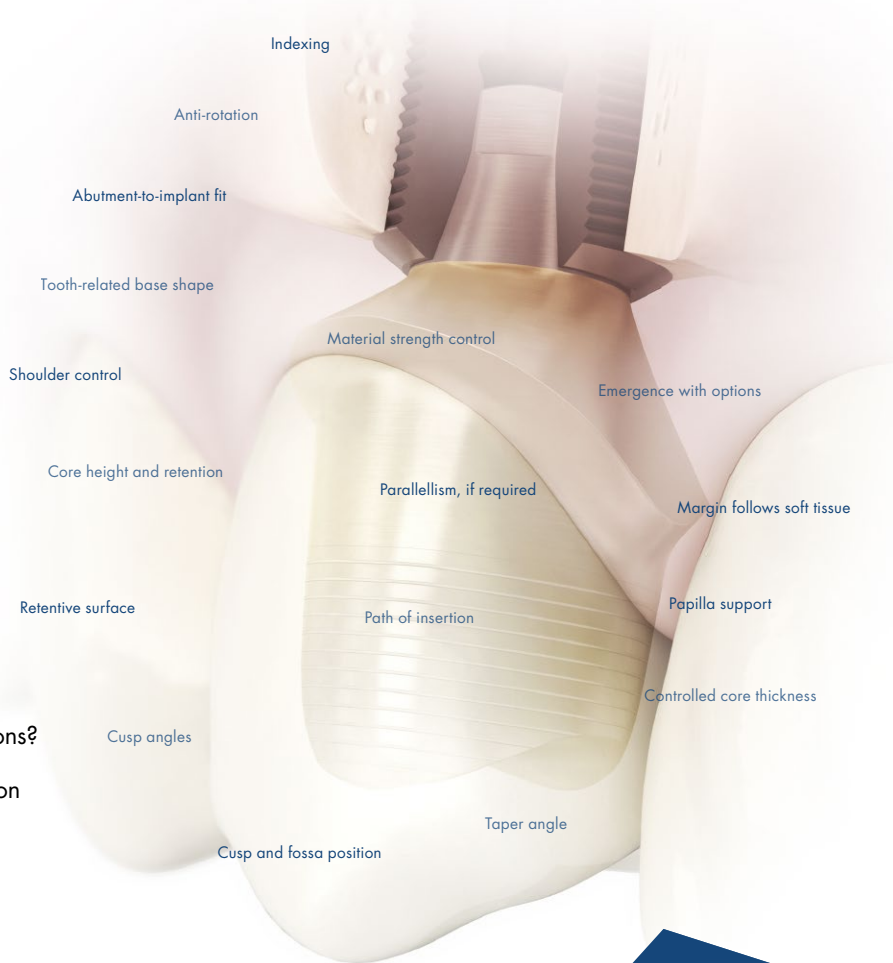
Proposed tooth shape



Abutment design taking all important factors into account



Final ATLANTIS Abutment design



ATLANTIS VAD™
considers numerous
features and design
parameters for premium
prosthetic solutions.

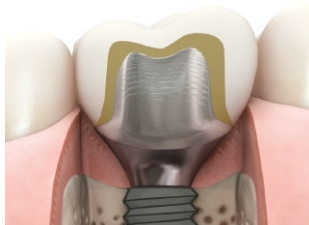
For all major
implant systems

Original abutments for patient-specific restorations

ATLANTIS abutments are patient-specific abutments, designed to fit the individual patient's anatomy.

Each abutment is individually designed in ATLANTIS VAD, from the final tooth shape taking the specific edentulous space, surrounding teeth and soft tissue anatomy into consideration.

Taking these factors into account produces implant prosthetics that mimic true natural tooth function and appearance.



ATLANTIS patient-specific abutment



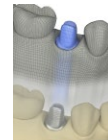
Stock abutment

Cement-retained restorations

ATLANTIS Abutment is a uniquely designed, patient-specific abutment for cement-retained restorations.

Margins are ideally designed and placed for easy and safe removal of excess cement and the abutments can be installed using the ATLANTIS Abutment Insertion Guide. This ensures efficient restorative procedures, reducing chairtime.

Ordering is simple and requires only a standard impression sent to the dental laboratory with a request for an ATLANTIS Abutment.



ATLANTIS™ Abutment Core File

The digital file of the total case, including the outer surface of the ATLANTIS Abutment, allows the dental laboratory to design a temporary or final crown even before the final ATLANTIS Abutment is delivered.



ATLANTIS Abutment Insertion Guide ensures correct installation of the ATLANTIS Abutment and simplifies the restorative handling procedures.



ATLANTIS Abutment in titanium, milled from a solid titanium alloy blank, titanium alloy 6Al-4V (grade 5). Suitable for all positions in the mouth.



ATLANTIS Abutment in gold-shaded titanium alloy 6Al-4V (grade 5) with a thin coating of biocompatible titanium nitride (TiN). Suitable for all positions in the mouth.



ATLANTIS abutments in zirconia, milled from solid blanks of yttria-stabilized tetragonal zirconia polycrystals (Y-TZP) and available in different shades. Suitable for all positions in the mouth.

Screw-retained restorations

ATLANTIS Crown Abutment is an efficient, effective and esthetic alternative to traditional cast abutments for single-tooth, screw-retained restorations with porcelain or composite applied directly to the abutment.

ATLANTIS Crown Abutments do not require further modification and do not require the use of cement, effectively reducing patient chairtime.

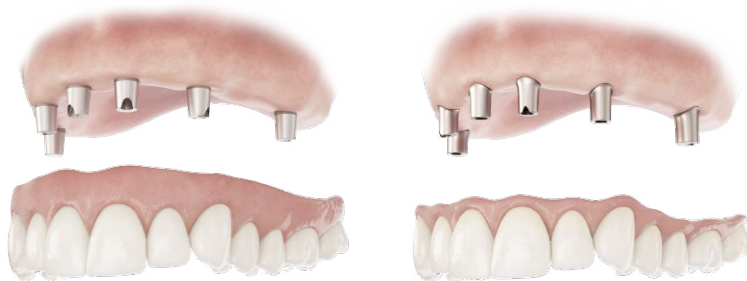
Likewise, screw-retained abutments are easily retrievable, if needed, saving you the time and cost of preparing a separate new crown.



ATLANTIS Crown Abutment is available in five shades of zirconia including a translucent option in white, as well as titanium.

Attachment-retained restorations

ATLANTIS Conus Abutment is a uniquely designed, conical shaped abutment that incorporates a friction fit, implant-borne prosthesis while being removable like an overdenture. It allows optimal access for oral hygiene while providing the patient with a cost-effective treatment option.



ATLANTIS™ Conus Abutment – overdenture

For removable overdentures designed to fit SynCone caps.

ATLANTIS™ Conus Abutment – custom

For removable bridges and overdentures with more individual design options.



ATLANTIS Crown Abutment does not require the use of cement, and can be easily retrieved if needed.



ATLANTIS Crown Abutment in titanium alloy 6Al-4V (grade 5) can be finalized with titanium porcelain or composite.



ATLANTIS Conus Abutment - overdenture is designed for optimal retention for the SynCone 5* caps.



SynCone 5* caps fits with friction fit to the ATLANTIS Conus Abutment – overdenture.

ATLANTIS™ is good business

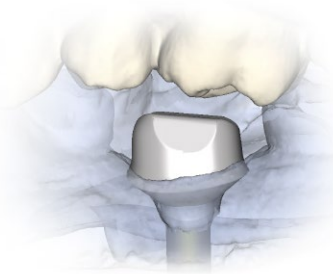
Incorporating ATLANTIS is an easy way to add a new, premium prosthetic dimension to the solution offerings of both dental practices and dental laboratories.

Available for all major implant systems, ATLANTIS supports streamlined and consistent workflows for all implant-supported restorations.

Additionally, ATLANTIS reduces time and costs related to inventory management, maintenance, and chairside

modifications. It brings simplicity and profitability to the dental practice, while freeing up time for additional cases to be created at the dental laboratory.

Best of all, ATLANTIS is an open, fully flexible business model that easily adjusts to dental practice and dental laboratory needs and processes, requiring no investment in software or equipment.



1 An implant-level impression is taken by the clinician and sent to the dental laboratory with a request for ATLANTIS abutments.

2 The order is entered by the dental technician using ATLANTIS WebOrder. Case models and materials can be shipped to DENTSPLY Implants or scanned at the dental laboratory.

3 All ATLANTIS abutments are designed by DENTSPLY Implants using the ATLANTIS VAD software. Designs can be reviewed and/or edited in ATLANTIS 3D Editor before being produced by DENTSPLY Implants.

4 Once produced, ATLANTIS abutments are returned to the dental laboratory which then produces the final prosthetic solution and sends the completed case back to the clinician.



Designed for practice success

- A choice of anatomical emergence profiles for excellent function and esthetics
- Simple restorative procedure – just take an impression and send it to your dental laboratory with a request for ATLANTIS abutments
- Comprehensive warranty program*

Developed for laboratory efficiency

- Consistent, premium quality and delivery performance regardless of order volume
- Time designing and modifying abutments eliminated, freeing up skilled technicians' time for other tasks
- No investment in or maintenance of additional equipment and software



**Subject to the terms and conditions of the ATLANTIS abutments warranty.*

Immediate Smile® featuring ATLANTIS™ Abutment

With this digital treatment concept, all components for guided implant placement and immediate, individualized temporization are available at one single surgical visit. The ATLANTIS Abutment and temporary crown are delivered at implant installation and provide ideal conditions for individualized esthetics and healthy soft tissue.

Intraoral scanning for ATLANTIS™ Abutment

The streamlined process of using intraoral scanning (compatible with iTero) ensures efficient coordination between the dental practice and dental laboratory.

Lab-based scanning for ATLANTIS™ abutments

Lab-based scanning capability (compatible with 3M ESPE Lava, 3Shape and Dental Wings) allows the dental laboratory to quickly and easily transfer digital scan information to DENTSPLY Implants.

ATLANTIS Scan Upload (stand alone software tool) allows dental laboratories with open STL scanners to upload scans for ATLANTIS abutments.

ATLANTIS™ WebOrder

ATLANTIS orders can be conveniently placed 24 hours a day, 7 days a week via an online ordering system for order entry that is quick and easy.

ATLANTIS VAD™ software

Virtual abutment design software that considers the edentulous space and surrounding teeth for higher precision and more natural esthetics.

ATLANTIS™ CaseSafe

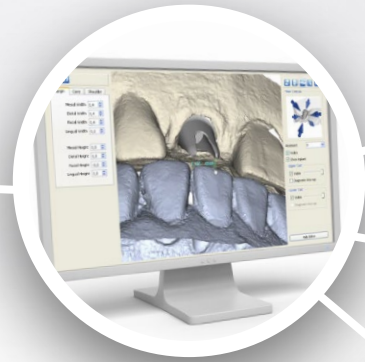
When DENTSPLY Implants is scanning the case, ATLANTIS CaseSafe ensures efficient processing of your order and safe transport of your case materials.

Let's get connected

DENTSPLY Implants provides digital solutions that make it easier for everyone to connect; streamlining the workflow for all your restorations.

This connectivity is a result of our commitment to delivering consistent, reliable and high quality product and services. It supports the collaboration between DENTSPLY Implants and our customers as well as among the members of the

treatment team and is present throughout the planning and treatment processes. Connectivity also helps guarantee that you receive exactly what you expect, each and every time.



ATLANTIS™ 3D Editor

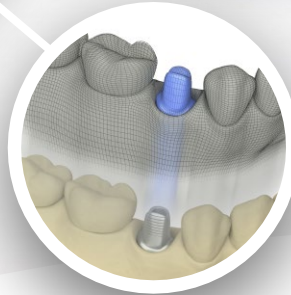
Allows for review and editing of the abutment design to be made before production.



ATLANTIS patient-specific abutments

The technology behind ATLANTIS provides an ideal foundation for function and esthetics.

It also allows for a functionally identical duplicate abutment to be ordered for use as a master die, which supports enhanced dental laboratory accuracy and optimized crown fit, while eliminating the need for placement and retrieval of the abutment used clinically.



ATLANTIS™ Abutment Core File

Digital file of the entire case, including the outer surface of the ATLANTIS Abutment, that allows the dental laboratory to design a temporary or final crown, even before the final abutment is delivered.



Later order of ATLANTIS™ abutments

Digitally-captured abutment design that allows for re-orders of original ATLANTIS abutments to be placed at a later date (with or without design changes), eliminating the need for additional impressions.

We have you covered

Naturally, the abutments solution that offers the greatest freedom is also backed by a comprehensive warranty. If an implant supplier does not honor its warranty due to your use of ATLANTIS abutments, DENTSPLY Implants will cover both the abutment and the implant.*



LIFETIME



LIFETIME



5 YEARS



For added assurance that your patients are receiving genuine ATLANTIS original abutments, warranty cards are provided with an order identification number for every case delivered.

*Subject to the terms and conditions of the ATLANTIS abutments warranty. Germany 30 years for titanium and gold-shaded titanium.

About DENTSPLY Implants

DENTSPLY Implants offers comprehensive solutions for all phases of implant therapy, including ANKYLOS®, ASTRA TECH Implant System™ and XiVE® implant lines, digital technologies, such as ATLANTIS™ patient-specific CAD/CAM solutions and SIMPLANT® guided surgery, SYMBIOS® regenerative solutions, and professional and business development programs, such as STEPPS™. DENTSPLY Implants creates value for dental professionals and allows for predictable and lasting implant treatment outcomes, resulting in enhanced quality of life for patients.

Follow DENTSPLY Implants



www.dentsplyimplants.com

About DENTSPLY International

DENTSPLY International Inc. is a leading manufacturer and distributor of dental and other healthcare products. For over 115 years, DENTSPLY's commitment to innovation and professional collaboration has enhanced its portfolio of branded consumables and small equipment. Headquartered in the United States, the Company has global operations with sales in more than 120 countries.

