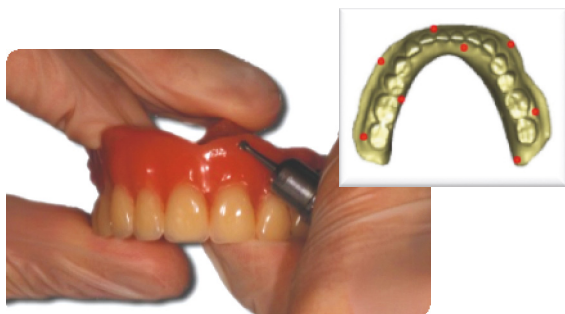


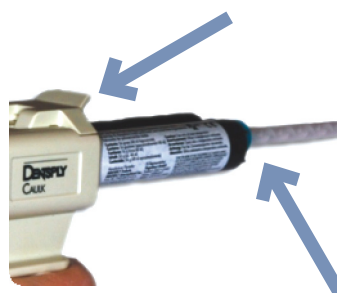
How to fabricate a scan prosthesis for the dual scan procedure? Recommended for CT and CBCT

The scan prosthesis is an existing removable prosthesis or a radiolucent duplicate of the diagnostic tooth set-up with 8 Dual Scan Markers integrated or glued onto the surface. There are no special design specifications. Conventional

radiolucent resin can be used to fabricate the scan prosthesis. Use only validated Dual Scan Markers, otherwise accurate scatter free images cannot be guaranteed.



- 1** Create eight small, superficial cavities – Some close to the tooth-gingiva border, others close to the outer border.



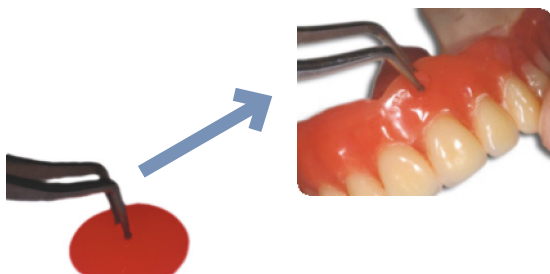
- 2** Insert the cartridge in the dispenser gun and install the mix tip. Make sure the mix tip is locked properly.



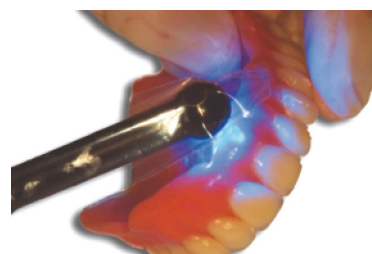
- 3** Dispense an amount of radiolucent resin.



- 4** Use tweezers to grab a Dual Scan Marker from the container.



- 5** Submerge the Dual Scan Marker in the resin and place in one of the cavities.



- 6** If necessary, add some extra material and light cure to reduce curing time. Repeat steps 4, 5 and 6 for all Dual Scan Markers.

Tip: When only a superficial cavity has been made and the Dual Scan Markers are glued onto the surface, they can easily be removed after the scanning procedure.