

Simplant® Pro 18

Premium software delivers premium value

Delivering more value to dental professionals helps specialists like you to provide better, safer and faster dental care to patients. We continuously strive to fulfill the needs of our loyal customers, which is why we have created Simplant Pro 18: one of the most comprehensive dental implant planning suites on the market, giving you all the innovative tools in the Simplant portfolio. Furthermore, we have carefully optimized our tools and processes to enhance both user experience and timings involved in the guide ordering process. This has enabled us to offer you a first-class 48-hour manufacturing of our Simplant Guide.

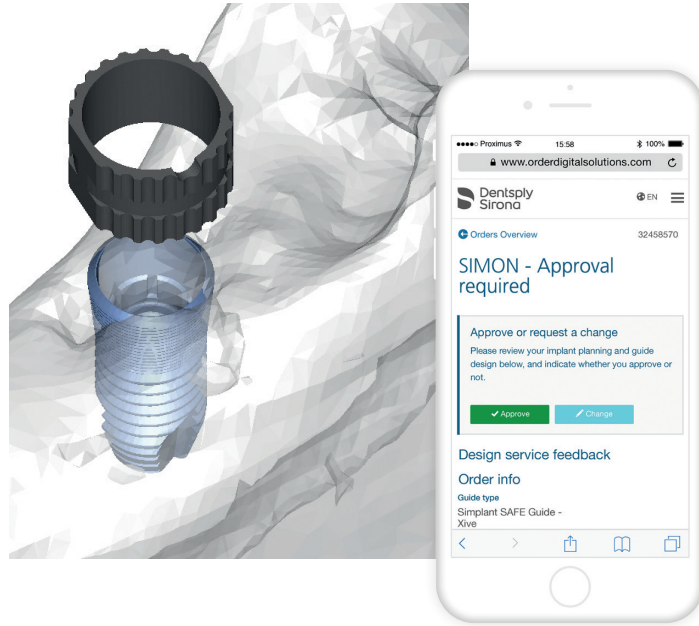
Upgrade to Simplant Pro 18 and you'll be connected to the latest Dentsply Sirona systems and be part of a global market driver which is shaping the future of dentistry - a smart investment in your future.



A simpler, faster and more straightforward way to receive guides, now and in the future

To benefit from 48 hours guide manufacturing: Either choose to upload digital scan files in your Simplant software or through your guide order via our newly deployed ordering system. STL files as well as Omnicam IO scans can be uploaded with your guide order.

- Easily view guide sleeve options and different guide designs before ordering the Simplant Guide. This way, dentists can fix technical limitations in their planning or change guide choices to ensure a fast manufacturing process.
- With our new guide ordering system comes ease of use for our customers: order pages and notifications have been simplified, and order follow-up is now possible via iPhone!
- And the best part is that as a Simplant Pro 18 user you'll continue to benefit from all our future developments, so you'll always be up to date with the latest technology in our ordering platform.



Introducing the first truly Online Implant Library

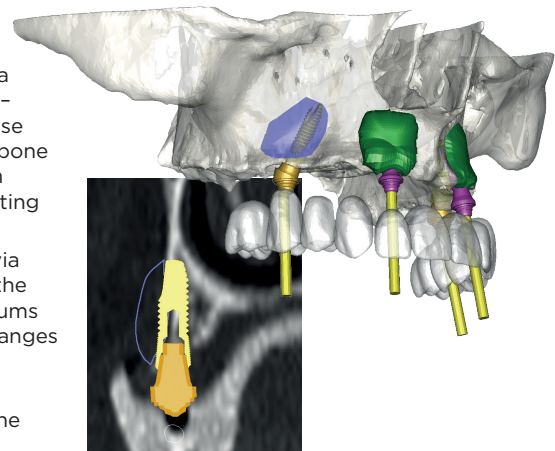
A totally revamped system now brings you faster updates with less hassle. Set up your library from the start, configure the manufacturers *you* want to work with and let Simplant do the rest; it's that quick and easy. What's even better, is that with these new developments we can offer you more frequent updates which the system will automatically inform you about. New additions like the new SmartFix System and some Astra Tech Implant System updates are already coming your way thanks to these faster revisions.

Get the most out of this premium offer

Simplant Pro 18 allows our specialists to better control their complex cases so they can detect problems beforehand and avoid complications. All modules are now available in one single suite:

When you upgrade to this premium software product, you'll benefit from:

- Prosthetic data integration via *Optical or Dual Scan Modules* - Find the best angle and position of implants with the expected prosthetics in mind.
- Bone grafting planning tools via the *Advanced Grafting Module* - Better prepare the surgical phase by doing a quick simulation of bone grafts. Simplant will also inform you of the volume of bone grafting material you need.
- Advanced 3D modelling tools via the *Editing Module* - Visualize the anatomy of bones, teeth and gums in 3D and simulate anatomy changes like tooth extraction sockets.
- Share and review cases with your team and colleagues via the *Simplant View Module*.



www.dentsplysirona.com

THE DENTAL SOLUTIONS COMPANY™

